



**ZYMO RESEARCH**  
The Beauty of Science is to Make Things Simple

Fits any situation.



## RNA from any Sample.

**Quick-RNA™** (any sample: cells, tissue, biological liquids)

- **Broad Range:** Extract total RNA (including small/micro RNAs) from any sample.
- **DNA-Free:** Genomic DNA removal column and DNase I included.
- **NGS-Ready:** RNA is ready for all downstream applications including Next-Gen Sequencing, RT-qPCR, hybridization, etc.



[info@zymoresearch.com](mailto:info@zymoresearch.com)

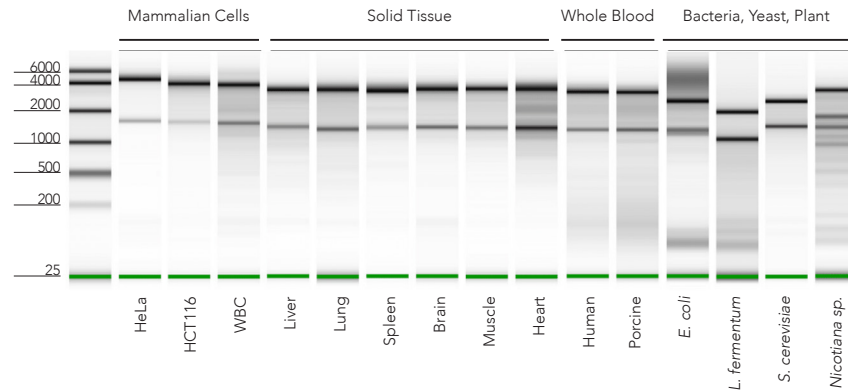


[www.zymoresearch.com](http://www.zymoresearch.com)



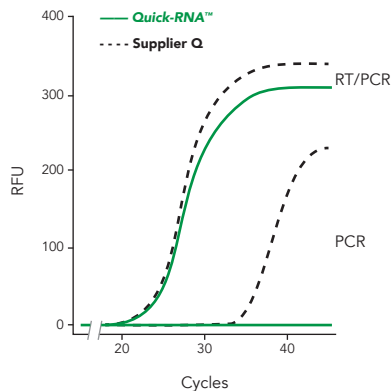
Toll Free: (888) 882-9682

## Universal Sample Compatibility



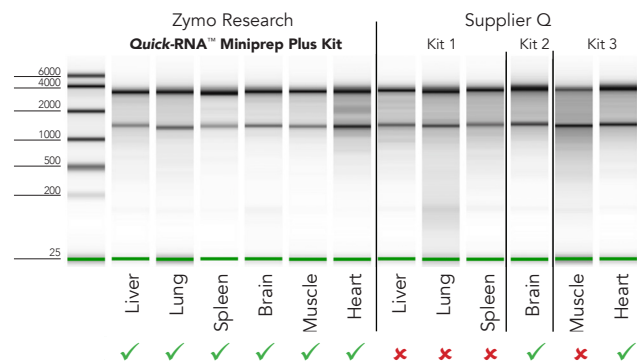
The Quick-RNA™ Miniprep Plus kit is universal and accommodates any sample input including cultured cells, any tissue, whole blood, tough-to-lyse samples, etc.

## DNA-Free RNA



RNA isolated with Quick-RNA™ kit is DNA-free compared to a Supplier Q kit. Total RNA was isolated from  $10^6$  human epithelial cells (with in-column DNase treatment for both kits,  $n=3$ ).

## NGS-Ready RNA



High-quality RNA was consistently isolated with the Quick-RNA™ Miniprep Plus kit (left), but not with Supplier Q kits (right). Quality was assessed using the Agilent 2200 TapeStation® system; red = low quality.

Product	Cat. No.	Size	Binding Capacity	Minimum Elution	(Animal) Cells	Tissue	Sample Inputs
Quick-RNA™ Microprep	R1050 R1051	50 preps 200 preps	10 µg	6 µl	$\leq 10^6$	$\leq 5$ mg	Cells; Soft Tissue
Quick-RNA™ Miniprep	R1054 R1055	50 preps 200 preps	100 µg	50 µl	$\leq 10^7$	$\leq 50$ mg	Cells; Soft Tissue
Quick-RNA™ Miniprep Plus	R1057 R1058	50 preps 200 preps	100 µg	50 µl	$\leq 10^7$	$\leq 50$ mg	Cells; Any Tissue; Whole Blood
Quick-RNA™ Midiprep	R1056	25 preps	1 mg	200 µl	$\leq 10^8$	$\leq 100$ mg	Cells; Soft Tissue
Quick-RNA™ 96	R1052 R1053	2 x 96 preps 4 x 96 preps	10 µg	25 µl	$\leq 10^6$	$\leq 5$ mg	Cells; Soft Tissue
Quick-RNA™ MagBead	R2132 R2133	1 x 96 preps 4 x 96 preps	15 µg	50 µl	$\leq 10^6$	$\leq 5$ mg	Cells; Any Tissue; Whole Blood

